

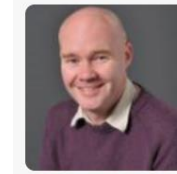


“**EDUCATING** the mind  
without **EDUCATING**  
the heart is no education  
at all.”

Aristotle

## Letter from the Head Teacher

On behalf of the children, staff and governors we would like to welcome you to Berrycoombe Primary School.



**Craig Robertson**

Head Teacher

If you are new, or curious about our school read our prospectus or visit our website at-

<http://www.berrycoombeschool.co.uk/website/home>

both give you a flavour of the wonderful learning that takes place here.

At Berrycoombe we believe that education is important because it gives your child freedom and choice both now and in the future. Education empowers children. We are committed in ensuring that your child makes an excellent start to their learning.

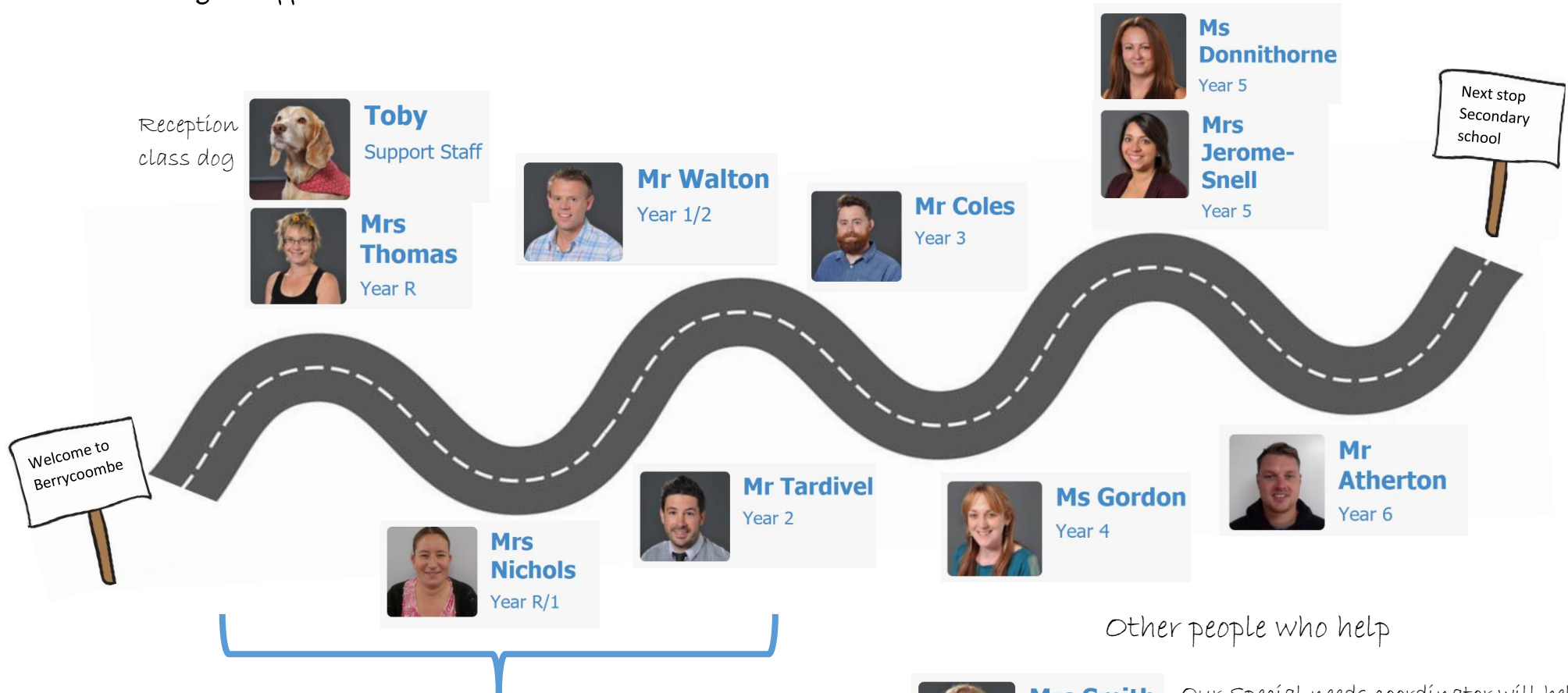
At Berrycoombe we have high aspirations and hopes for your child. We will ensure they love their learning and have fun, that they feel safe at school and fulfil their full academic potential.

We are friendly, informal and always willing to listen, support and help.

Kind Regard

Craig Robertson

## Teaching Staff



We split our **Reception**, **Year 1** and **Year 2** classes across 4 classes so the classes are really small (about 25 children).

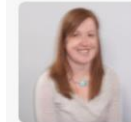
This means our youngest children get lots of time with their teachers

## Other people who help



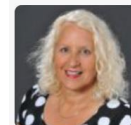
**Mrs Smith**  
SENCO

Our special needs coordinator will help you and your child if you need something different or extra to make great progress



**Mrs Claire Johnson**  
Parent Support Advisor

Our parent Support Advisor can offer you help with a whole range of parenting issues



**Mrs Williams**  
Business Manager



**Ms Natalie Dowling**  
Secretary

Our office team are happy to help at any time

## What we stand for

Children are our  
number one priority



Literacy is really  
important. It unlocks  
learning now and in  
the future



School is safe and  
children feel safe



Learning is fun and  
memorable



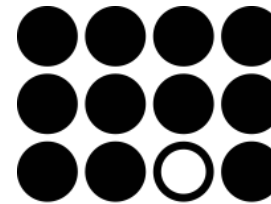
Children are kind  
and empowered



Every child makes  
exceptional progress



Every child needs  
something different  
to make exceptional  
progress



Children own their  
learning and  
understand how  
they learn



## Our governors



Governor name	Type of Governor
Alexander Wilton	Co-opted Governor
Craig Robertson	Head Teacher
Fiona Whayman	Parent Governor
Hannah Fugill <i>Chair of governors</i>	Co-opted Governor
James Ward <i>Vice Chair</i>	Co-opted Governor
Joe Atherton (Year 6 teacher)	Staff Governor
Judith Luker	Co-opted Governor
Sophie Burton (Teaching assistant)	Staff Governor
Debbie Henderson	Co-opted Governor

Governors are the schools critical friends. Supportive but challenging. They support us in making good decisions that are right for the whole school community.

They meet 4 times a year and have regular smaller meetings looking at specific areas like finance, curriculum, buildings and Health and safety.

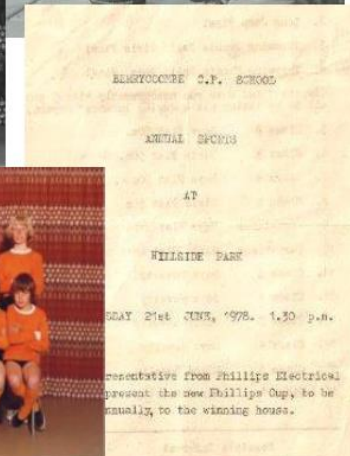
They are friendly, supportive and very approachable. If you want to talk to a governor just ask at the office.

If you are interested in becoming a governor let the office team know.



## School History

Prince Charles  
opened our school in  
1980.



For over 40  
years,  
Berrycoombe  
primary has  
been a proud  
part of our  
local  
community

# Our Curriculum and school day



Morning 9:00 am start

For a large part of the the **morning** we focus on reading and writing



Younger children learn these things through play and learn their phonics

**cat zoo**

Every class has a class book, which they read every day



We discuss and explore this book together. We use our class book to give us ideas for our writing

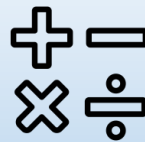


We talk about our writing with our teacher in a special meeting and we have writing targets to get better



Break

For the rest of the morning we focus on maths



As a school we have a big focus on arithmetic as this will power the rest of your child's mathematical thinking.

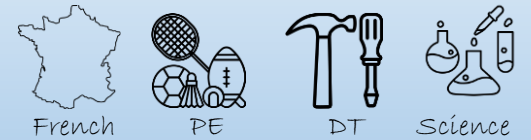


Afternoon 3:15 pm finish



Lunch

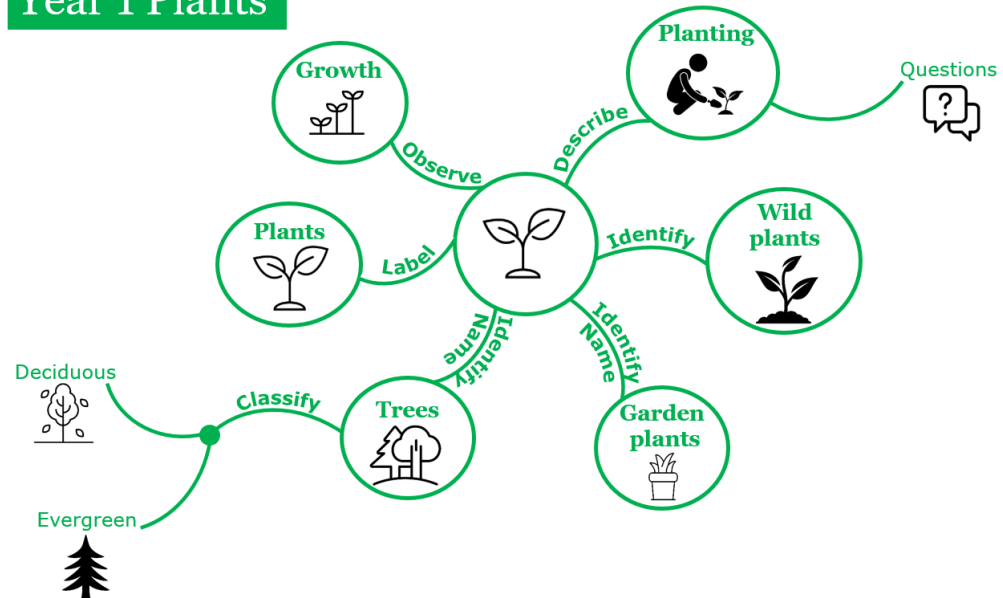
For the afternoon we focus on the other areas of the curriculum and the class topic



We also have Religious education and Personnel social and emotional education in the afternoons.

We learn a lot in a school day so to help your child remember their learning we use mind maps. These help your child remember and recall key information they have learnt now and in the future.

## Year 1 Plants



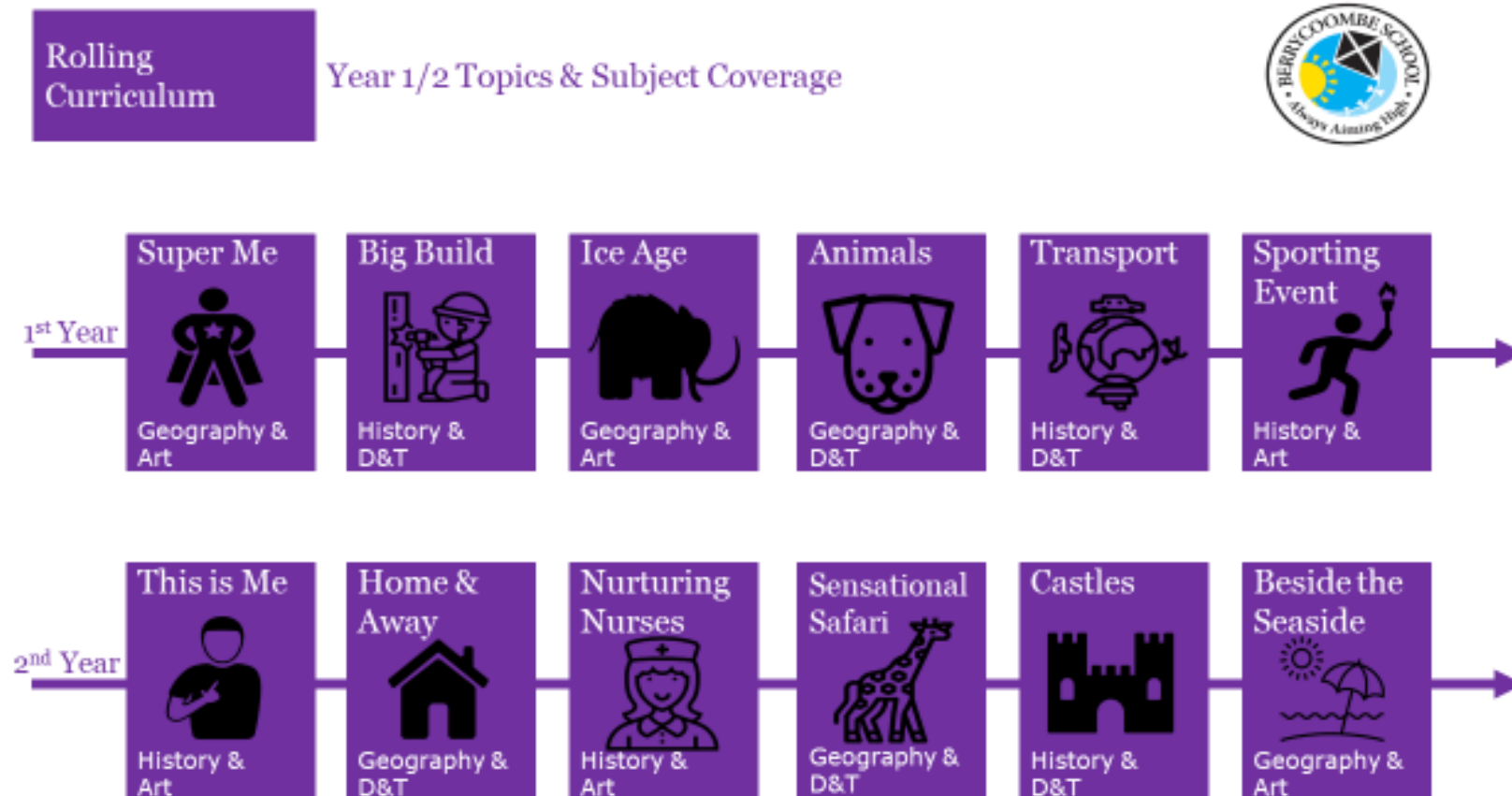
Each half term we have a different topic

We teach the national curriculum but most importantly, we make sure it is fun and memorable.

We have a two year rolling curriculum introduced in 2019-2020 which started with the second year

More details of what each class is learning can be found on the class webpage on our website

Year 1 and 2





## Year 3 and 4

## Rolling Curriculum

## Year 3/4 Topics &amp; Subject Coverage



## Year 5 and 6

## Rolling Curriculum

## Year 5/6 Topics &amp; Subject Coverage



**Reception** class change their learning topic regularly in response to the children's interests. From Dinosaurs to Vets. Whatever the children are excited about becomes a topic focus.

## Event weeks

**Christmas Parties Friday (with special guest)**

- You teacher will let you know when
- Please send in sealed food (e.g. bags of crisps, wrapped biscuits)

**Art**

- The story of Christmas.
- Beautiful art telling the Christmas story in the style of the artist the children learnt about this term
- Check out each classes art on the virtual art gallery on our website

**ASSEMBLY**

- Virtual sharing assembly on Wednesday. Who has worked the hardest?
- Special prizes a give aways

**14<sup>th</sup> – 18<sup>th</sup> December**

**Berrycoombe's Big Christmas**

**Music**

- Classes will be practicing their Christmas carols outside.
- Each class will have their carol on the website for a virtual carol concert

**Maths**

- With 2.2 billion children on earth, how many cookies does Santa eat each Christmas? Get ready to get your mind round some mind boggling Christmas maths!

**PSHE**

- Why does giving make you feel good?
- Children will explore the true meaning of Christmas and the joy of giving!
- Children will investigate a number of Christmas themed charities and debate the charity they would like to donate too.

**Literacy**

- Which charity should the class donate to
- Persuasive arguments and impassioned speeches

**PE Get fit for Christmas**

- Sponsored walk to the north pole
- It's only 2,732 miles to the north pole
- Collectively can we do it?

**RE**

- The Christmas story.

**Christmas the movie**

**A Berrycoombe Christmas Story (with aliens)... THE MOVIE!**

- It's going to be epic.
- Book your tickets (or watch it on our website)
- Starting Year 2 and a host of special guests

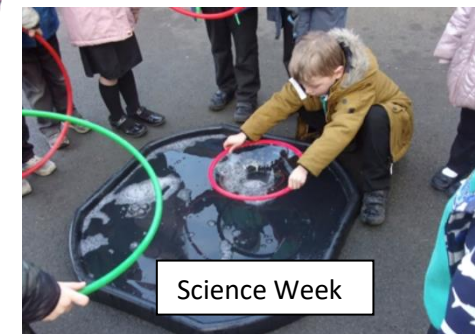
**Christmas Dinner (in a Box)**

- 16<sup>th</sup> December is Christmas dinner.
- Heather Cook the school cook is already preparing.
- It's Christmas dinner with all the trimming but in a box. Delicious and safe.

**DRESS-UP DAY - THURSDAY**

- Come in your most Christmassy jumper. Qc...
- Come dressed as your favourite action figure toy. Qc...
- Just come casual and comfy
- Please bring a £1 to be donated to a charity of the classes' choosing

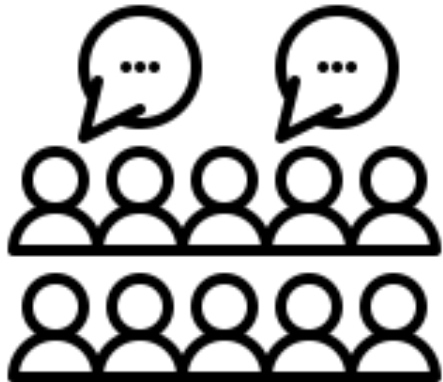
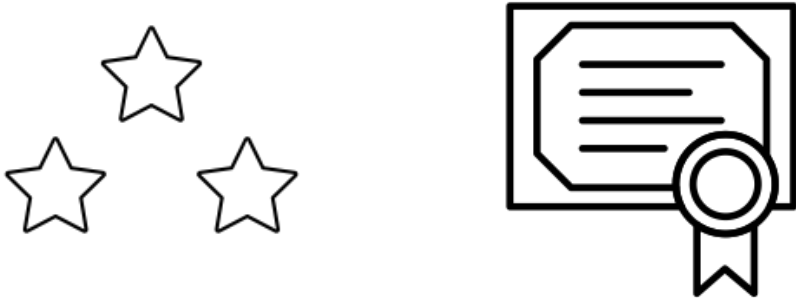
Berycoombe primary prides itself on taking it's commitment to making learning fun seriously. Every half term the school hold s a special event week. We regularly talk to the school council to identify what the children would like to learn and create a themed event week



## Assemblies

We have daily assemblies. Sometimes these are in the classroom. Sometimes these are as a whole school.

Our assemblies are inclusive of all faiths and beliefs. They are 'broadly Christian' and focus on the moral obligations we have to each other as part of a community (as a school, locally and globally)

Class assemblies	Whole school
<p>Classes explore what has gone well in the week.</p> <p>They also explore and discuss issues relevant to the class for example</p> <ul style="list-style-type: none"> <li>• kindness,</li> <li>• how we help each other</li> <li>• how we get unstuck</li> </ul> 	<p>We meet regularly during the week as a whole school. Sometimes these assemblies are key stage assembly</p> <ul style="list-style-type: none"> <li>• Reception, Year 1, Year 2</li> <li>• Year 3, Year 4, Year 5, Year 6</li> </ul> <p>This allows us to ensure assemblies are well targeted to age groups. We have singing and focus on key issues for the school.</p> <p>We have a celebration assembly every week</p> <p>In these assemblies we celebrate acts of kindness, amazing work and incredible achievements (like making really good progress).</p> <p>We also celebrate children who have demonstrated really good learning skills. We call these skills building learning power skills.</p> 

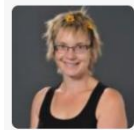


## Reception class (Your first year at school)

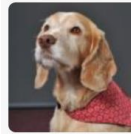
This is an incredibly important year.

Your reception children will be in one of two classes

Reception class



**Mrs Thomas**  
Year R



**Toby**  
Support Staff

Reception Year 1 class



**Mrs Nichols**  
Year R/1

Reception teaches all the early learning goals so your child has an excellent start to their learning journey. We ensure teaching is-

- Fun and playful
- Nurturing
- Collaborative

Both these classes are small and both offer very similar experiences which includes-

- Lots of adults for children to talk to and get support from
- A play based curriculum where children play and learn
- Access to outdoor learning throughout the day
- Forest schools sessions weekly
- A welcoming and supportive team who are happy to help you support your child to make a good start to their learning journey



## Religious education



The school delivers the agreed Cornwall Syllabus. R.E is taught to inform children about the belief systems of the major faith groups including Christianity, Judaism, Hinduism, Buddhism and Sikhism. No assumption is made about any child's belief system. If for any reason you wish to remove your child from R.E, please contact the Head teacher.

## Relationship and sex education



Children begin learning about their bodies from the moment they enter the school (e.g. the parts of the body and how their body works). As the children get older (Year 5 and 6) the curriculum starts preparing them for puberty and the different types of relationships that people have. This work with older children is always sensitive, thoughtful and age-appropriate. Where areas relating specifically to puberty, relationship and sex education are covered, parents will be notified in advance by letter to allow you to prepare for any questions the children might have. The Relationship and sex Education Curriculum will always be presented in the context of family life, loving relationships and respect for others.

## Behaviour



Good behaviour is essential for a caring community and at Berrycoombe we have one simple rule for all; to treat others with respect. We have a positive approach to discipline, rewarding good behaviour and discouraging the bad. We realise that school and home must work together to develop positive attitudes in our children, and we are very grateful for your help with this. The school takes all incidents of bullying very seriously. Please inform a member of staff immediately if you suspect that your child is being bullied.

## Emotional support



**Mrs Trudgeon**

Nurture Team



**Mrs Hunt**

Nurture Team

School can be a difficult and challenging place for some children some of the time. This can be for a wide variety of reasons sometimes completely unrelated to school. Berrycoombe has a nurture team. Two full time Teaching assistants who are qualified TIS practitioners (Trauma Informed Schools). In addition to the caring and nurturing class based teams, they can provide support to children who are struggling emotionally.

## After School (and before school) clubs

We have a wide variety of clubs before and after school.

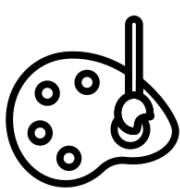


**Breakfast Club** For Busy families. Breakfast club runs every day from 8:00 am-9:00 am. There is no need to book. Healthy Cereal, bagels and lots of fun activities.

£2 per child.



**Sports clubs** Sports clubs run every week after school run by qualified sport coaches. These clubs change throughout the year in response to the requests that children make through schools council but include, football, multi sports, tag rugby street surfing.



**Other clubs** The school also runs a wide variety of other clubs from art club and film club to forest school club. These clubs change and develop throughout the year as children express an interest through schools council.

## Payment



The school is cashless. We use parent pay to allow parents to pay for things like school dinners and uniform. It is simple and easy to use. You simply sign up to the service, log onto the Berrycoombe page and you will see a list of all the things available to purchase.

## School council



Berrycoombe has an active school council. Each year each class has an election where every child votes. They elect their school councillors who attend fortnightly school council meetings. During these meetings, the children discuss and make important decisions including-

- Playground equipment selection
- School meal selection
- Special Event week selection

## Parental Support Advisor



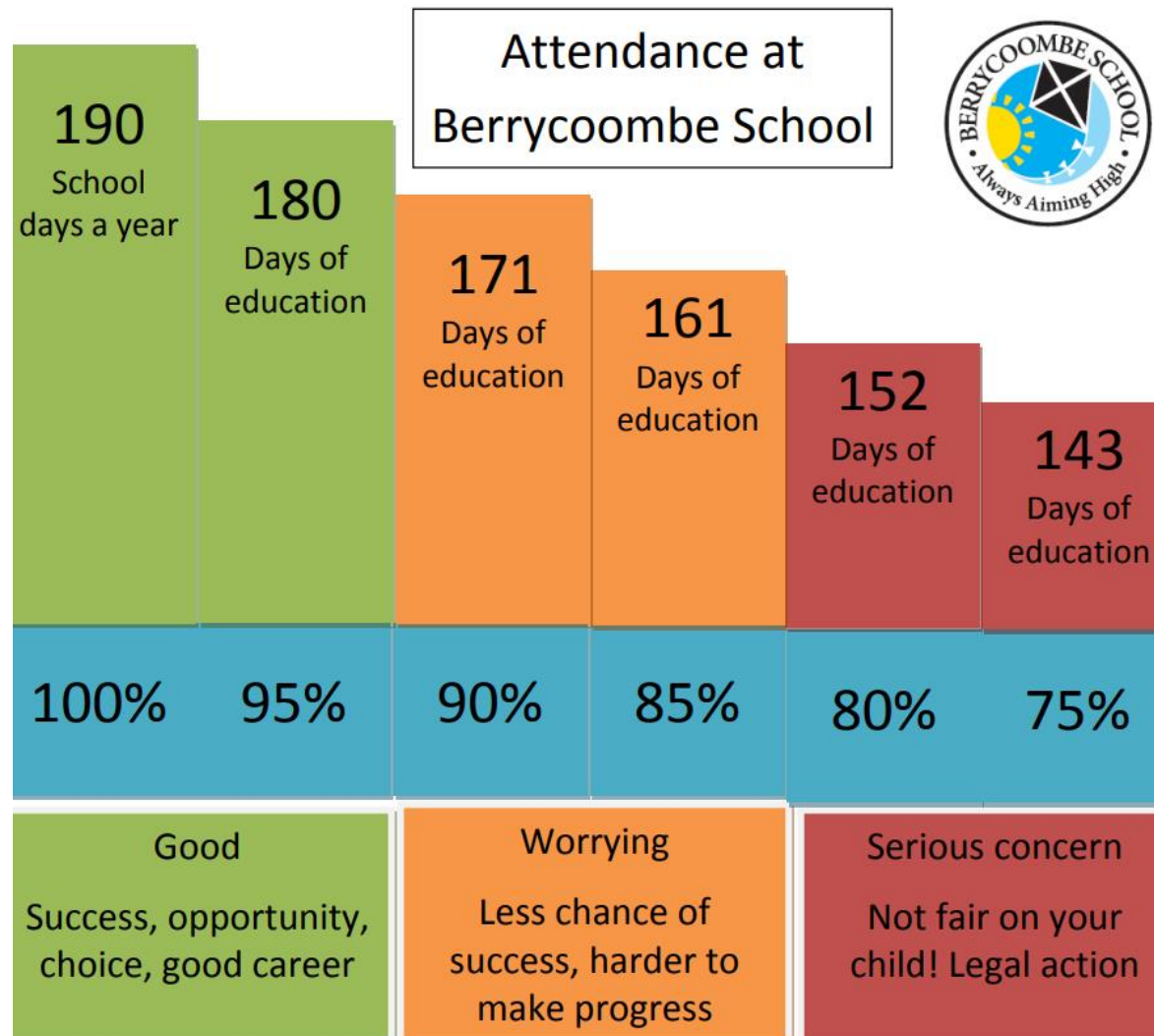
**Mrs Claire Johnson**  
Parent Support Advisor

Claire works with parents offering a whole range of support from housing, benefits to behaviour and parenting. This service is confidential and details will not be shared with the school unless you ask them to be.

The PSA can be contacted on 07917611469 or by email at [psa@berrycoombe.cornwall.sch.uk](mailto:psa@berrycoombe.cornwall.sch.uk)



## Attendance



*'Absence makes the learning harder'*

Good attendance helps your child to be happy at school and to be successful and happy now and in the future.

### School Matters!



Phone the office if your child is going to be absent.

Every day at school matters. Only keep your child off school if they are ill.

## Assessment

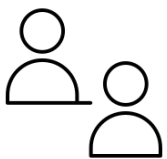


At Berrycoombe we continually assess and monitor your child's progress in order to best match the curriculum and activities to the individual needs of each pupil. As well as the day to day observations that teachers and teaching assistants make about each child's learning we also use the following assessments-

- We use small fortnightly arithmetic tests and end of term tests to assess maths.
- We use accelerated reader to track progress in reading along with end of term reading assessments.
- For younger children, phonics progress is assessed during a one to one screening activity with our phonics lead every six weeks
- Writing is assessed during individual pupil teacher progress meetings which happen weekly. Children identify what has gone well and agree targets for the following week. When they use their target they highlight it in pink in their writing books.

We use a computer program called 'Target Tracker' to identify progress over time. This helps in the early identification of children with special educational needs and helps us to stretch and develop all children in our care.

## Parent/Teacher Consultations



We have Parent/Teacher consultation days in the Autumn and Spring terms and will give a simple and clearly written report of your child's progress at the end of the Summer term. In addition, we strive to be informal and accessible to parents and are very happy to discuss any issues or concerns. Class teachers are available at the beginning and end of the school day in their classrooms and the class teachers for Key stage 2 children (Year 3, Year 4, Year 5 and Year 6) will follow their class onto the playground every day in case there is something you want to discuss.

## Special Educational Needs



**Mrs Smith**  
SENCO

Berrycoombe Primary School prides itself on provision for pupils with additional needs. Our most recent Ofsted report concluded that the quality of learning for pupils with SEN and/or disabilities and their progress was "good" because of "the carefully targeted support they receive". We work with a wide range of partners and experts from outside teams to help us ensure that children of all abilities make progress and feel safe and happy at school. As a result of our good provision and facilities, our inclusive approach and our good results for pupils with SEN, many parents select our school even from outside our catchment. We welcome all pupils and will partner with you, as parents and carers, to ensure a good outcome for all. Our coordinator for pupils with additional and/or special needs is available to chat through concerns after you have raised the issues with the class teacher.

## Educational visits and visitors



We believe that education should be as broad and exciting as possible, therefore each class aims to make an out of school educational visits every half term. We also offer residential trips for children in Years 5 and 6 during the summer term. We may ask for a parental contribution to enable trips to take place.



This might not be representative of an actual school trip

## Safeguarding



**Craig Robertson**  
Head Teacher



**Mrs Claire Johnson**  
Parent Support  
Advisor



**Mrs Thomas**  
Year R

Everyone at school has a responsibility to ensure the safety and wellbeing of all our children. We take this responsibility very seriously so that your children are safe. If there are concerns regarding the safety of your child we will discuss these with you openly and honestly. Everyone who works at our school has had safeguarding training. The school fully complies with its's legal responsibility to share any significant concerns with other agencies. Craig (Head Teacher) is the designated safeguarding lead, Hannah (Assistant Head) and Claire (PSA) are the deputy leads.

## Medication



If your child requires medication during the school day, please fill in the relevant form that is available from the school office. This form, along with the medication, should be handed to the office who will ensure that your child receives the right medicine at the right time.

## Car Parking



In order to keep our children safe, parents are asked not to bring their cars onto the school premises at the start and end of the school day and not to drive up to the gates of the school. Parking is available a short walk away in the Camel Trail car park.

## School Lunches



For those children who don't choose to bring a packed lunch, Berrycoombe School endeavours to provide healthy and delicious school meals. A copy of the menu is available from the school office. Children can select their meal each day and the selection always includes a vegetarian option and a salad bar. Mrs Cook (our school cook) also provides meals which cater to a variety of dietary needs. Lunches should be paid for via 'parent pay.'



## Free School Meals



Under Government Legislation free school meals are available for all Key Stage 1 children (Reception, Yr 1 and Yr 2). Also for families who receive certain benefits. Application forms can be obtained from the school office.

## Snacks



As part of our status as a healthy school, children are provided with a warm bagel just before their morning break. At Key Stage 1 (Year R, Year 1, Year 2) we also provide children with a piece of fruit. If your child is in an older class, they are allowed to bring in a piece of fruit for a snack if they prefer that to a bagel.

## School Website



At Berrycoombe School we have an excellent website, full of information to help you and your child. Just type in Berrycoombe School into your search engine to access this site. The contents of the site include; a calendar of upcoming events and dates, weekly updates on what's happening in each individual class and how you can support your child with their learning. There is also a page the children can use which links them to other safe educational sites.

## Online Learning

Our school uses a number of online learning APPS which support homework. These include



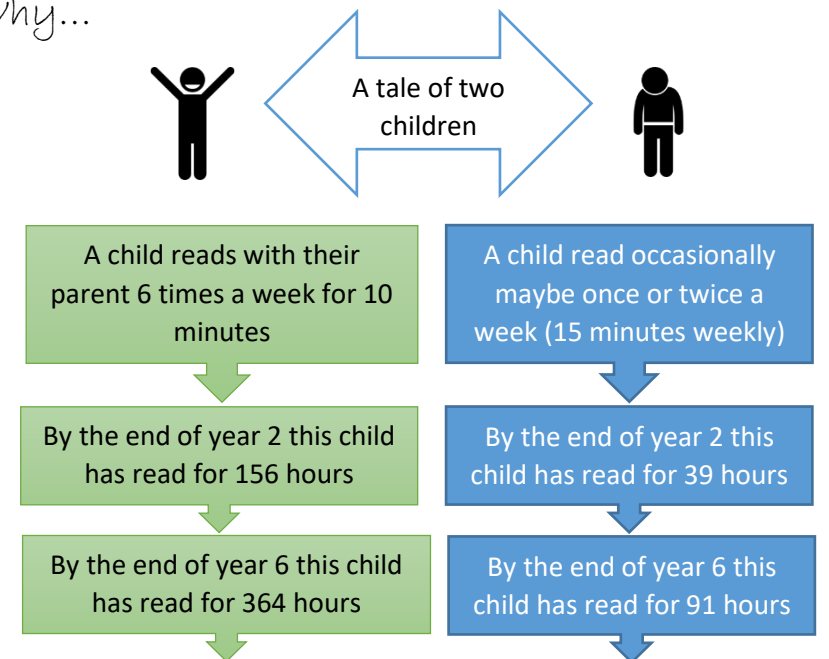
## Homework



The **MORE** that you  
**READ**, the more things  
 you will **KNOW**.  
 The **MORE** that you  
**LEARN**, the more places  
 you'll **GO**.

The most important piece of homework you can do with your child is to read at home regularly. As a school we ask that you read at least 3 times a week but more would be fantastic.

The truth is it all adds up. Children that read regularly make better progress at school. Why...

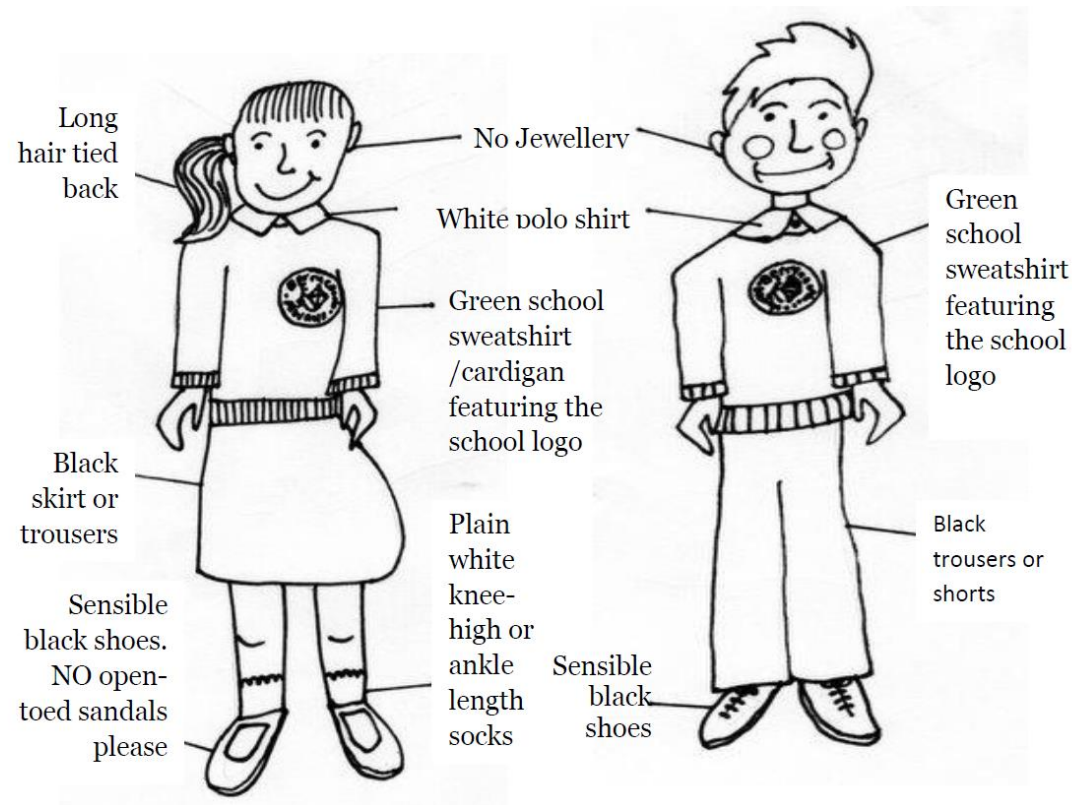


One of these children has four times the amount of vocabulary and reading experience. **This will really help them at secondary school.**

364 hrs

91hrs

## School uniform



We believe that uniform creates a sense of belonging and community.

In summer a green-check summer-dress can also be worn with the school cardigan.

Waterproof Book bags are available at £3.75 and P.E. Bags at £3.00 are also available.

**All uniform** can be purchased from the School Office between 8.45am – 9.00am and 3.15pm – 3.30pm each day. School sweat shirts cost £9 and cardigans cost £11 (the wholesale cost)

**All uniform** should be clearly marked with your child's name.

## P.E.

Promoting physical exercise and activity is an important part of being a healthy school. Older children participate regularly and younger children have daily, shorter P.E. sessions. Most children do PE in the normal school clothes. Removing jumpers before running around.

## Swimming



### Kit-

- Swimming costume/trunks
- Towel
- Plastic bag for wet clothes

Swimming is charged below cost (the school subsidises the total cost). You will be informed when your child will be swimming and we ask, where possible, that you pay in advance. If you are struggling to pay for swimming please approach the PSA to discuss this.

## valuables



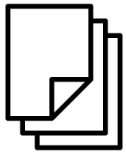
Children are asked NOT to bring valuables into school and this includes mobile phones. If you feel that your child needs a phone, please ensure that it is clearly marked with your child's name and that they hand it in at the office at the beginning of the school day and then collect it at 3.15pm.

## Lost Property



Please make sure that all clothes are clearly marked with your child's name as this dramatically reduces the number of lost items and ensures that when things get lost (and they will) that eventually they will find their way back to you.

### School Documents and Official Information



Various school documents and Governors public Minutes are available for parents to see. All our Policies, along with the Ofsted Report are available to read in full on the school website. If you do not have access to the internet please ask for a paper copy from the school office.

### Complaints



We endeavour to deal with any issue or concern promptly and informally. We have an open door policy. No time is a bad time to come and discuss something that may be bothering you or your child. A member of the senior management team is on the gate every day (Rain or shine). In the first instance, please speak to your child's class teacher or the Head Teacher. If this should fail to resolve the situation, there is a formal complaints procedure that is available to all parents. A copy of this is available from the school office and on the school website.

If you have any more questions  
please do not hesitate to ask we are  
always happy to answer.